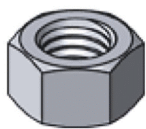
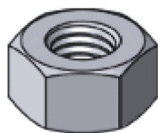


Nut Types



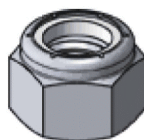
Hex

A six sided nut. Also referred to as a Finished Hex Nut.



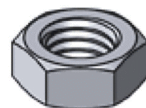
Heavy Hex

A heavier pattern version of a standard hex nut.



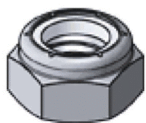
Nylon Insert Lock

A nut with a nylon insert to prevent backing off. Also referred to as a Nylock.



Jam

A hex nut with a reduced height.



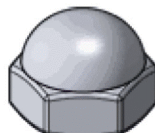
Nylon Insert Jam Lock

A nylock nut with a reduced height.



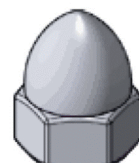
Wing

A nut with 'wings' for hand tightening.



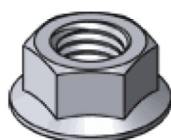
Cap

A nut with a domed top over the end of the fastener.



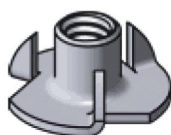
Acorn

Acorn nuts are a high crown type of cap nut, used for appearance.



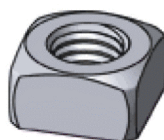
Flange

A nut with a built in washer like flange.



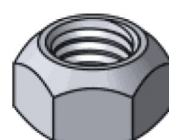
Tee

A nut designed to be driven into wood to create a threaded hole.



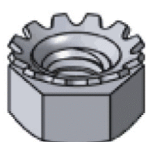
Square

A four sided nut.



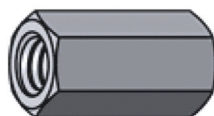
Prevailing Torque Lock

A non-reversible lock nut used for high temperature applications.



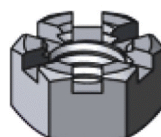
K-Lock or Kep

A nut with an attached free-spinning external tooth lock washer.



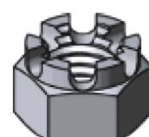
Coupling

Coupling nuts are long nuts used to connect pieces of threaded rod or other male fasteners.



Slotted

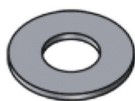
Slotted nuts are used in conjunction with a cotter pin on drilled shank fasteners to prevent loosening.



Castle

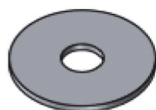
Castle nuts are used in conjunction with a cotter pin on drilled shank fasteners to prevent loosening.

Washer Types



Flat

A flat washer, used to distribute load. Available in SAE, USS and other patterns.



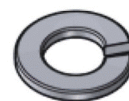
Fender

An oversize flat washer used to further distribute load especially on soft materials.



Finishing

A washer used to obtain a 'finished' look. Usually used with oval head screws.



Split Lock

The most common style of washer used to prevent nuts and bolts from backing out.



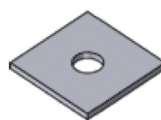
External Tooth Lock

A washer with external 'teeth'. Used to prevent nuts and bolts from backing out.



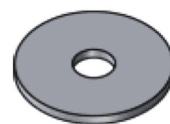
Internal Tooth Lock

A washer with internal 'teeth'. Used to prevent nuts and bolts from backing out.



Square

A square shaped washer.



Dock

Dock washers have a larger outside diameter and are thicker than standard.



Ogee

Thick, large diameter, cast iron washers with a curved or sculpted appearance. Typically used in dock and wood construction.